

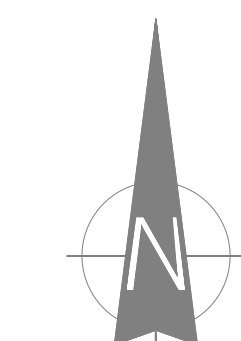
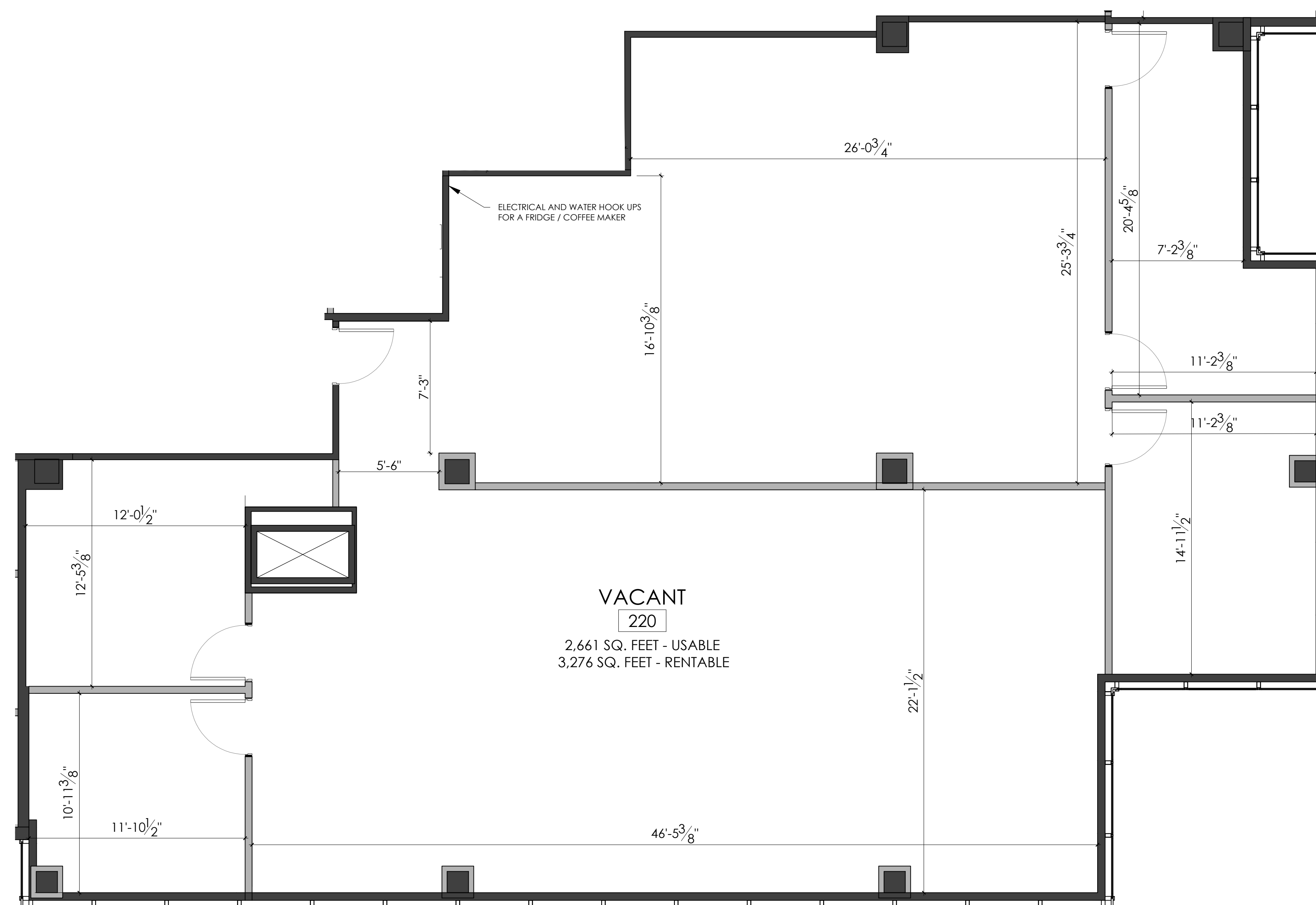
CONTACT:
 STOBER GROUP
 #1700 - 1631 DICKSON AVENUE
 KELOWNA, B.C. V1Y 0B5
 PHONE: 250.763.2305
 FAX: 250.763.4244

NOTES:
 ALL DIMENSIONS, LAYOUTS, & CALCULATIONS ARE APPROXIMATE & MUST BE VERIFIED ON SITE PRIOR TO ANY CONSTRUCTION OR INSTALLATION.
 LAYOUTS ARE SUBJECT TO CHANGE DUE TO EXISTING CONDITIONS.

CLIENT NAME:
 STOBER GROUP
 LANDMARK DISTRICT

PROJECT ADDRESS:

JOB DESCRIPTION:
 LANDMARK 4, FLOOR 2



TRUE NORTH

ISSUE FOR:
SCHEDULE A

REVISIONS:

No.	Description	Date	By

DRAWING TITLE:
 SCHEDULE A

SCALE:
 REFER TO PLAN

DRAWN BY:
 BB

CHECKED BY:

SHEET NO.
 3.2

01 #220 - VACANT OFFICE - SCHEDULE A
 3.2 SCALE - 1/4" = 1'-0"