

CONTACT:

 STOBER GROUP
 #1700 - 1631 DICKSON AVENUE
 KELOWNA, B.C. V1Y 0B5
 PHONE: 250.763.2305
 FAX: 250.763.4244

NOTES:

 ALL DIMENSIONS, LAYOUTS, &
 CALCULATIONS ARE APPROXIMATE &
 MUST BE VERIFIED ON SITE PRIOR TO
 ANY CONSTRUCTION OR INSTALLATION.

 LAYOUTS ARE SUBJECT TO CHANGE
 DUE TO EXISTING CONDITIONS.

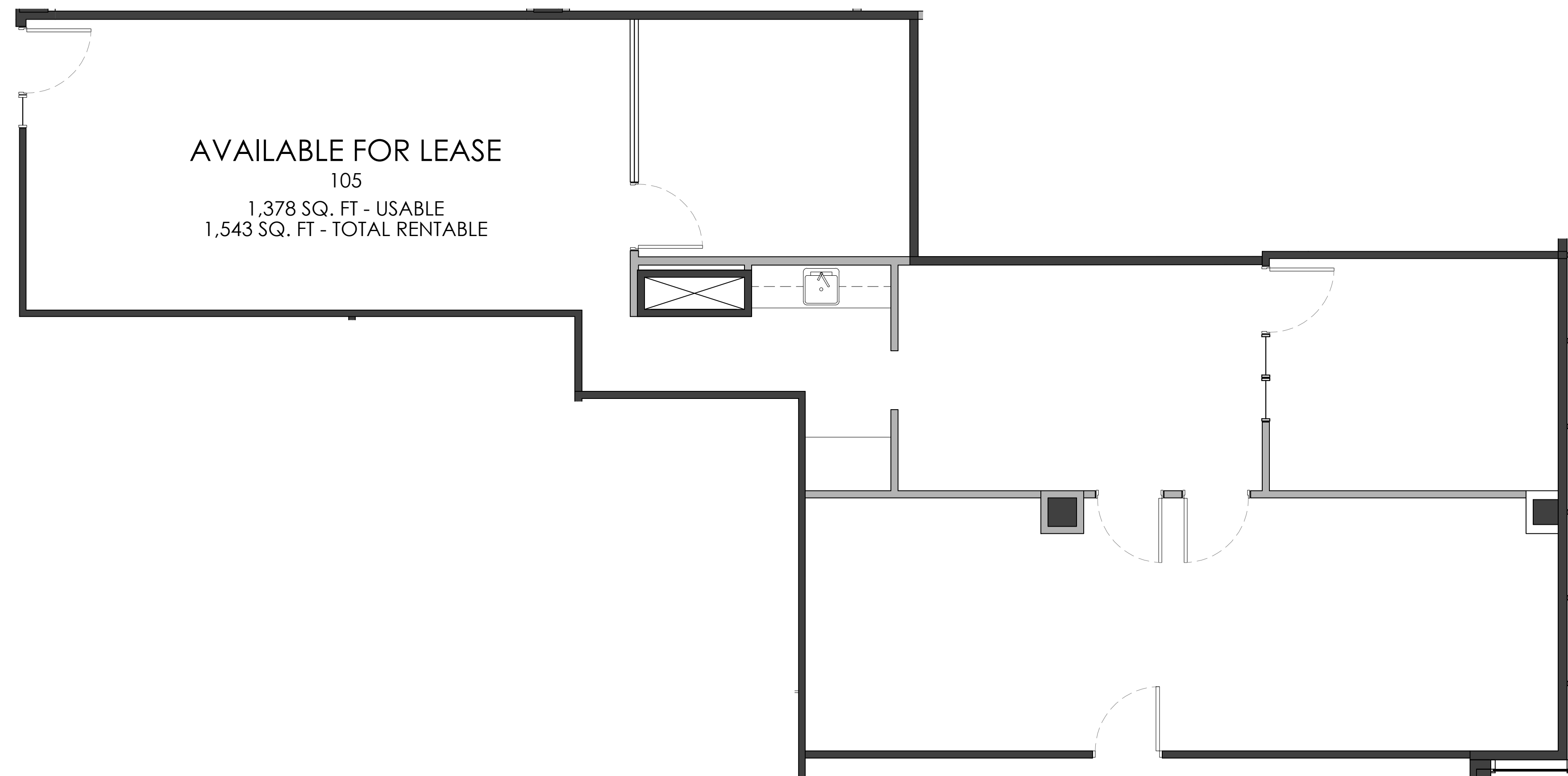
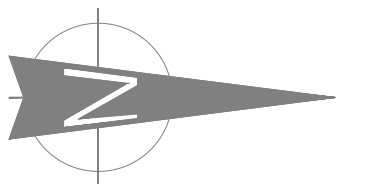
CLIENT NAME:

 STOBER GROUP
 LANDMARK DISTRICT

PROJECT ADDRESS:

JOB DESCRIPTION:

LANDMARK 3, FLOOR 1


 AVAILABLE FOR LEASE
 105
 1,378 SQ. FT - USABLE
 1,543 SQ. FT - TOTAL RENTABLE


TRUE NORTH

ISSUE FOR:

SCHEDULE A

REVISIONS:

No.	Description	Date	By

DRAWING TITLE:

SCALE:

REFER TO PLAN

DRAWN BY:

BB

CHECKED BY:

SHEET NO.

3.2

 01 #105 - AVAILABLE FOR SPEACE
 3.2 SCALE - 1/4" = 1'-0"

B I L I N P L A N