

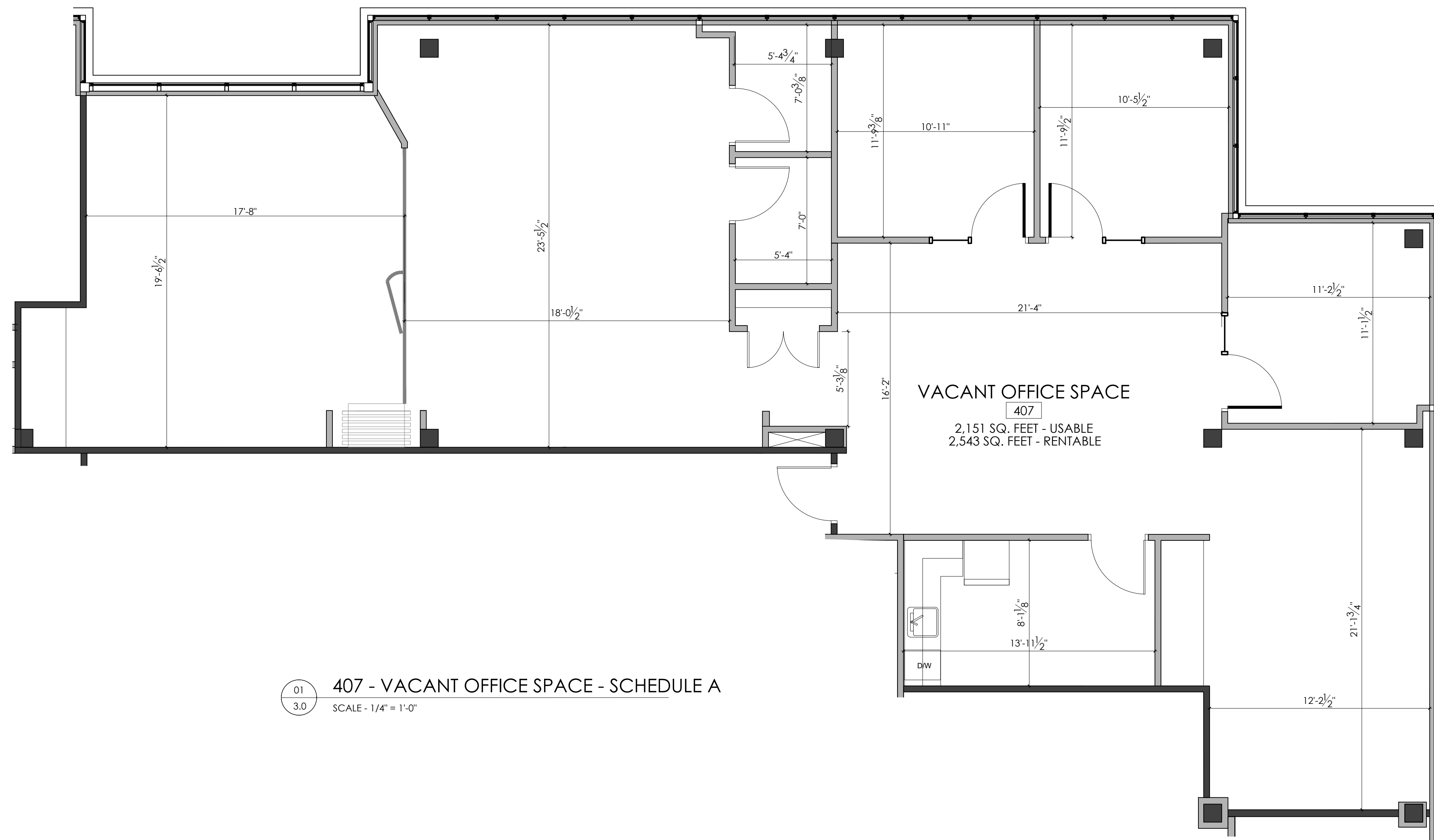
CONTACT:  
 STOBER GROUP  
 #1700 - 1631 DICKSON AVENUE  
 KELOWNA, B.C. V1Y 0B5  
 PHONE: 250.763.2305  
 FAX: 250.763.4244

NOTES:  
 ALL DIMENSIONS, LAYOUTS, &  
 CALCULATIONS ARE APPROXIMATE &  
 MUST BE VERIFIED ON SITE PRIOR TO  
 ANY CONSTRUCTION OR INSTALLATION.  
 LAYOUTS ARE SUBJECT TO CHANGE  
 DUE TO EXISTING CONDITIONS.

CLIENT NAME:  
 STOBER GROUP  
 LANDMARK DISTRICT

PROJECT ADDRESS:  
 SCHEDULE A

JOB DESCRIPTION:  
 LANDMARK 2, FLOOR 4



01  
 3.0 407 - VACANT OFFICE SPACE - SCHEDULE A  
 SCALE - 1/4" = 1'-0"



ISSUE FOR:  
**SCHEDULE A**

REVISIONS:

No.	Description	Date	By

DRAWING TITLE:  
 SCHEDULE A

SCALE:  
 REFER TO PLAN

DRAWN BY:  
 BB

CHECKED BY:

SHEET NO.  
 3.0