

CONTACT:

 STOBER GROUP
 #1700 - 1631 DICKSON AVENUE
 KELOWNA, B.C. V1Y 0B5
 PHONE: 250.763.2305
 FAX: 250.763.4244

NOTES:

 ALL DIMENSIONS, LAYOUTS, &
 CALCULATIONS ARE APPROXIMATE &
 MUST BE VERIFIED ON SITE PRIOR TO
 ANY CONSTRUCTION OR INSTALLATION.

 LAYOUTS ARE SUBJECT TO CHANGE
 DUE TO EXISTING CONDITIONS.

CLIENT NAME:

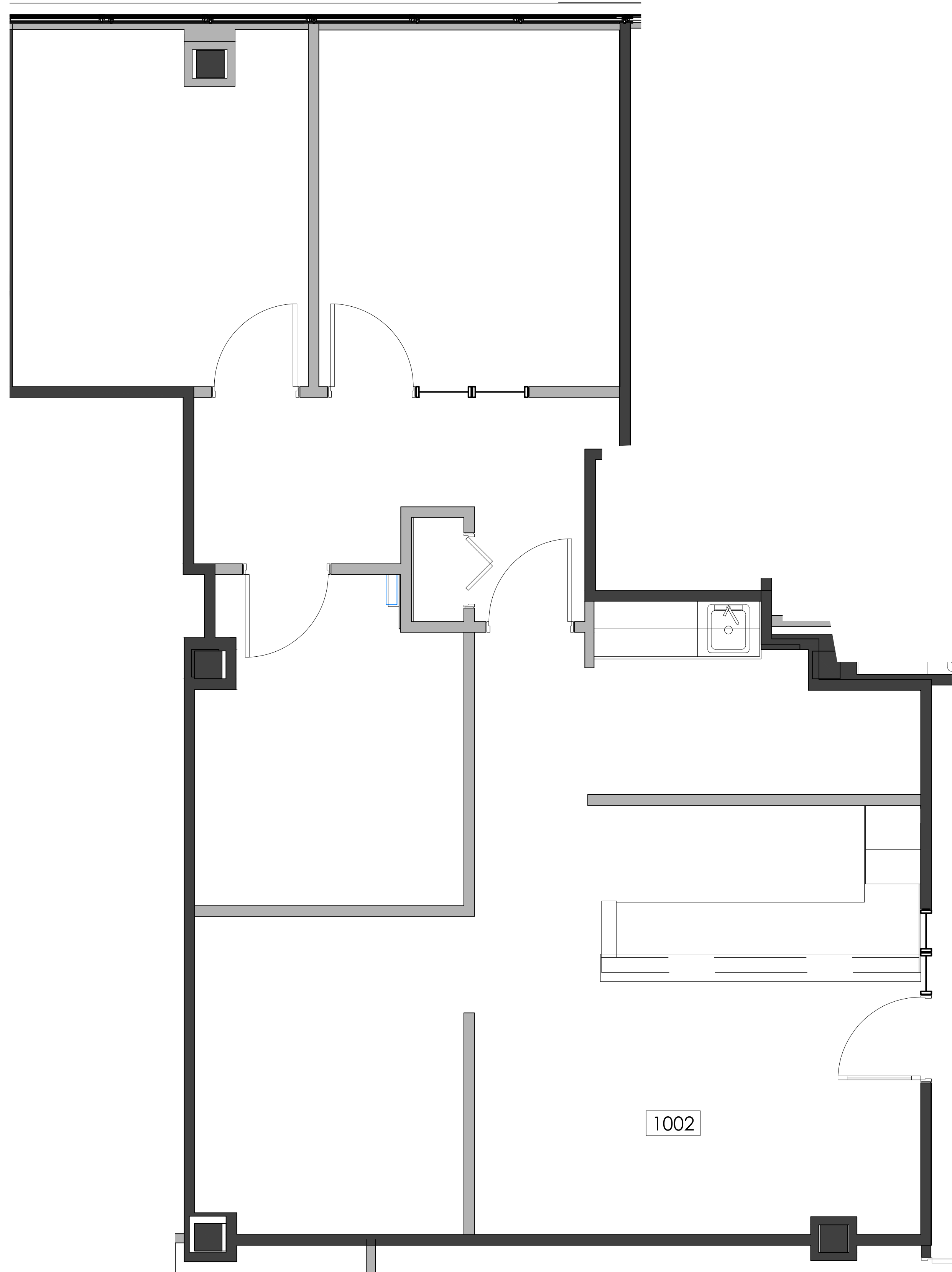
 STOBER GROUP
 LANDMARK DISTRICT

PROJECT ADDRESS:

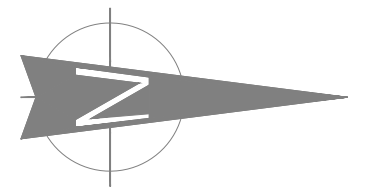
TENANT PLAN

JOB DESCRIPTION:

LANDMARK 2, FLOOR 10



1002

 01
 2.0 # 1002 - PITEAU ASSOCIATES ENGINEERING
 SCALE - 3/8" = 1'-0"


TRUE NORTH

ISSUE FOR:

COORDINATION

REVISIONS:

No.	Description	Date	By

DRAWING TITLE:

TENANT PLAN

SCALE:

REFER TO PLAN

DRAWN BY:

BB

CHECKED BY:

SHEET NO.

2.0